



# Technical Advisory Meeting #1

Mobile Downtown Airport Master Plan

Project Overview -

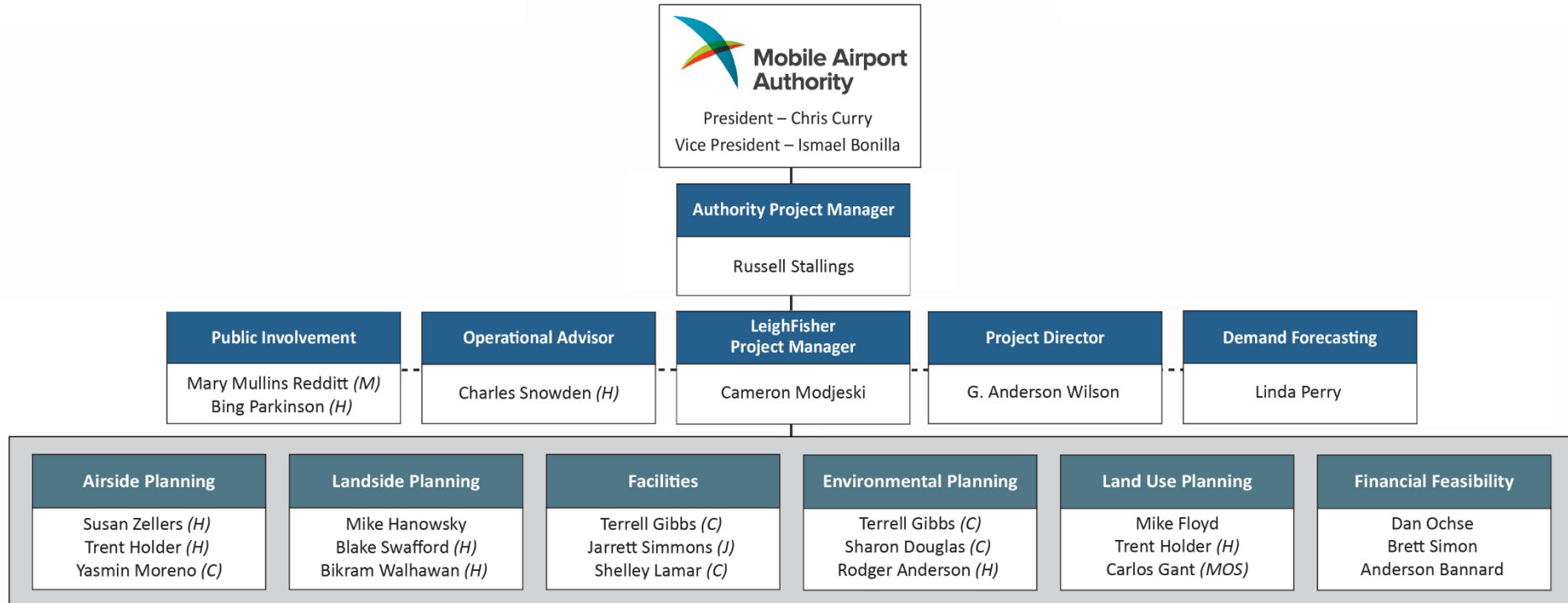


**Mobile Airport  
Authority**

# Agenda

- **Introductions and Technical Team Organization**
- **Scope of services**
- **Project Overview/Objective**
- **Schedule**
- **Committee Coordination and Communication**
- **Questions and Answers**

# Project Team

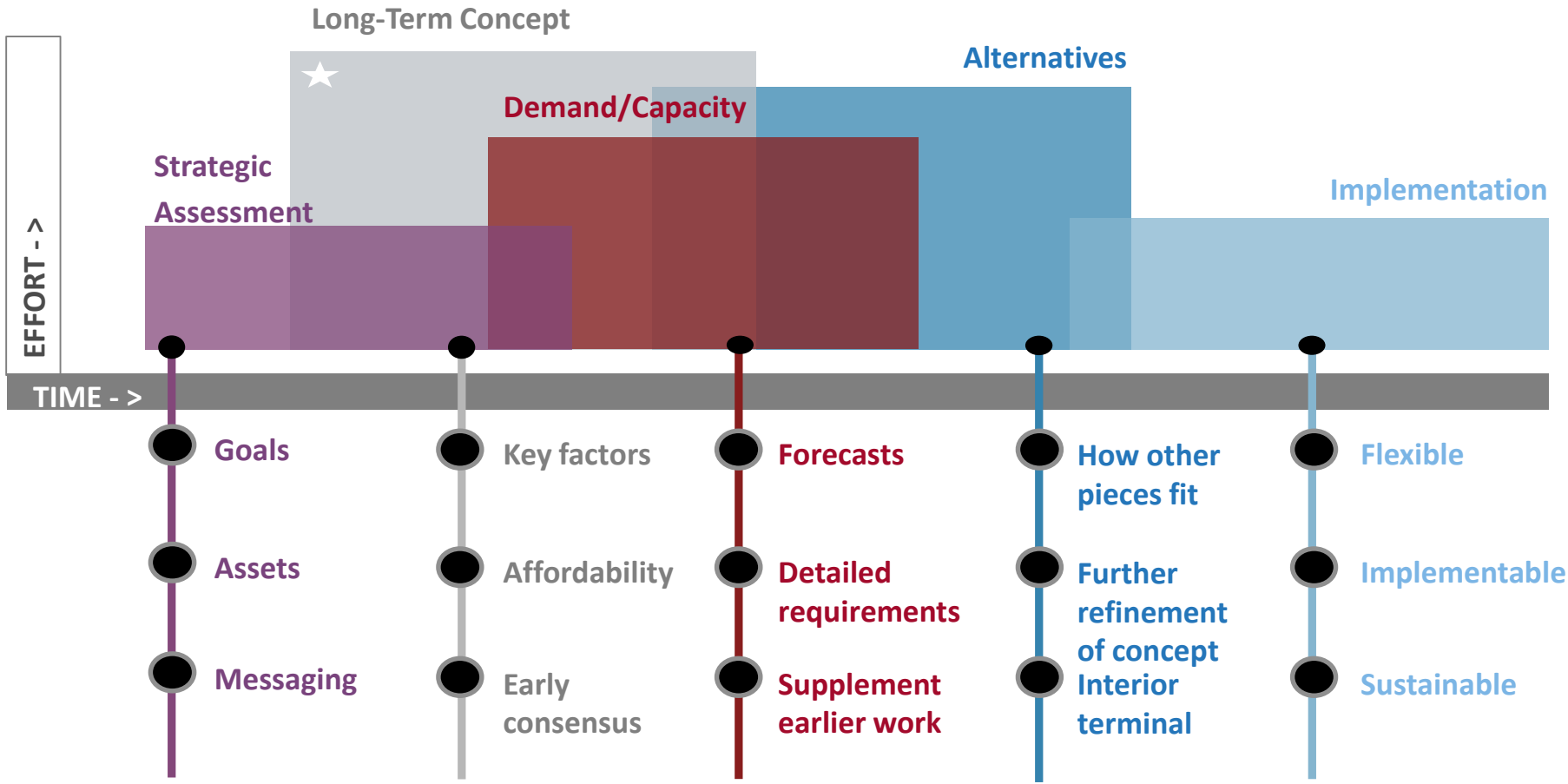


Note: All staff are LeighFisher unless otherwise noted.

C = CERM (DBE)  
H = Hanson Professional Services  
J = Jacobson|Daniels (DBE)

MOS = MOS Design  
M = Mpac Consulting

MO8512 F-0001



# Rules of Engagement

- **Facilitate open communication amongst participants**
- **No bad ideas!**
- **Do not hold back**
- **Clarity of reasoning**
- **Focus on long-term for now – understanding all existing tenant development plans**
- **We are not yet searching for consensus; rather information.**
- **Evaluation comes later. We do not need an answer today.**

## Near-Term Approach

- Starting point is the passenger terminal, airfield operations and access
- Until proven otherwise, we'll assume there is a roadway solution
- Biggest challenge with the passenger terminal is gates, land area requirement, and relationship with the airfield
- Landside access, circulation and parking

# Master Planning Goals (Technical Advisory Committee)

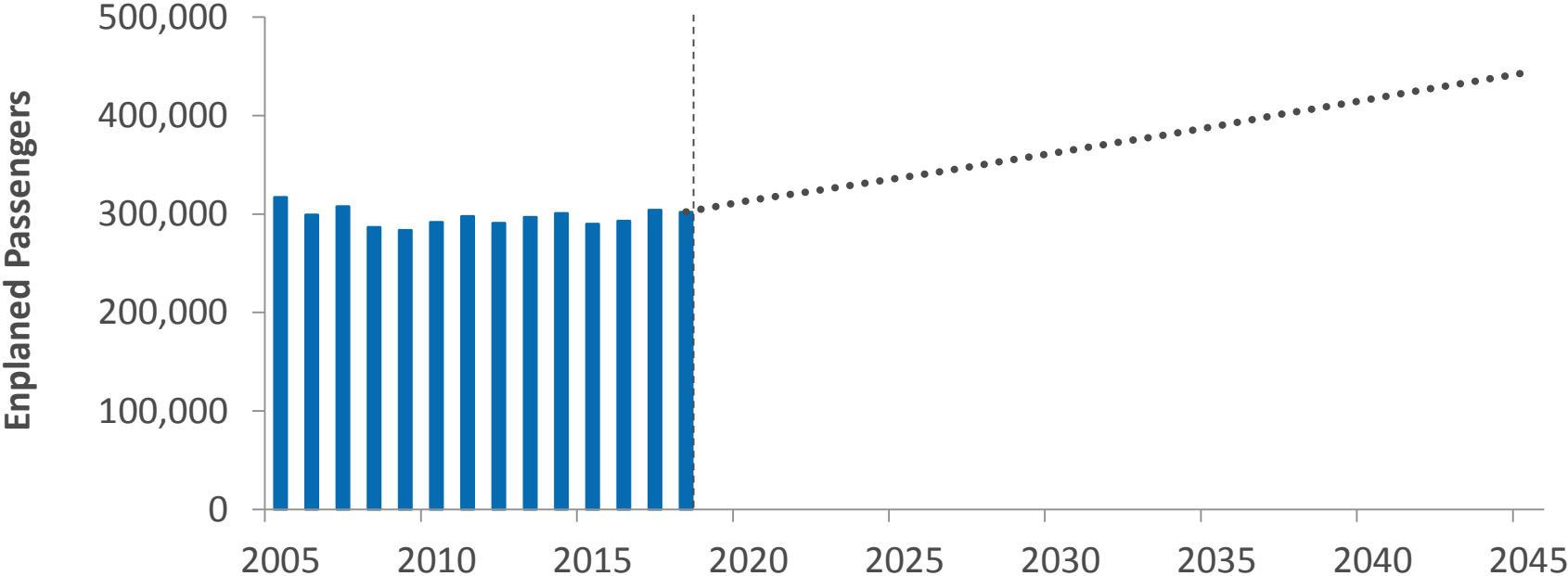
- **Provide a structure and roadmap to guide long term development and respond to the Community of Mobile**
- **Promote economic development**
- **Develop functionally supportable land use and access plan**
- **Establish sustainable consensus with key stakeholders**
- **Communicate Stakeholder vision to the Community**
- **Maximize Airport benefits for community, Regional and National economies**
  - Provide increased passenger access to national aviation system
  - Improved levels of customer service
  - Meet economic needs of the community and region
  - Establish and implement Highest and best use of airport property
  - Identify possible additions to the existing airport properties to accommodate future demand
- **Balance near-term opportunities with long-term requirements**

# Terminal Relocation Justification (2024-2026)

- **In 2017 Mobile Airport Authority commissioned a planning study to evaluate the feasibility of relocating passenger terminal from Regional to Downtown**
- **Study was funded and supported by Federal Aviation Administration**
- **Study findings produced positive results; identifying opportunities that may result from this relocation**
  - Improved capture rate of local travelers (reduce/eliminate leakage)
  - Possible expansion of available direct flight connections
  - Potential to have positive impact on fare structures
  - Attract additional travel options
  - Support the community at large

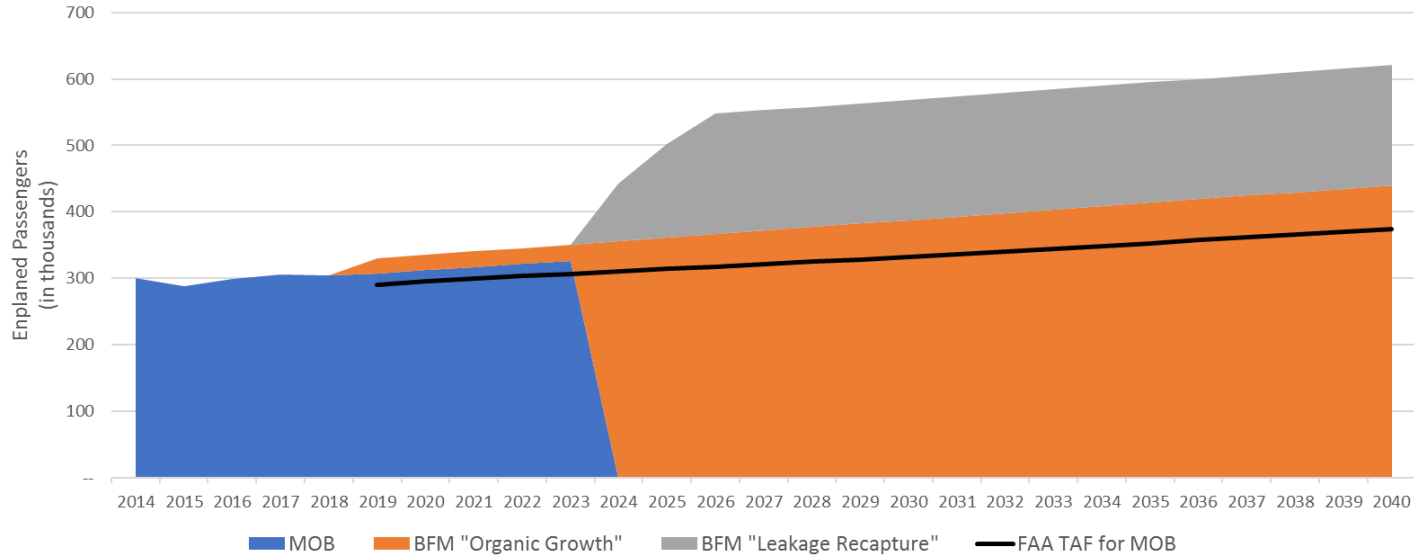


# FAA Terminal Area Forecast



Source: Historical – Airport Authority 2011 Official Statement, and Form 127 CATS  
Forecast - FAA TAF, issued January 2018.

# Preliminary Forecast Summary (PAX)



Enplanements	ACTUAL						EST	FORECAST																				
	2014	2015	2016	2017	2018	2019	2020	2021	2022	2023	2024	2025	2026	2027	2028	2029	2030	2031	2032	2033	2034	2035	2036	2037	2038	2039	2040	
MOB	301	288	299	305	304	308	312	317	321	326	--	--	--	--	--	--	--	--	--	--	--	--	--	--	--	--	--	--
BFM "Organic Growth"	--	--	--	--	--	23	23	24	24	25	356	361	367	372	377	382	388	393	398	403	409	414	419	424	430	435	440	
BFM "Leakage Recapture"	--	--	--	--	--	--	--	--	--	87	141	181	181	181	181	181	181	181	181	181	181	181	181	181	181	181	181	
FAA TAF for MOB	--	--	--	--	--	290	295	299	303	307	310	314	317	321	325	328	332	336	340	344	349	353	357	362	366	370	374	
FAA TAF for MOB (plus Frontier est.)	--	--	--	--	--	312	318	323	327	332	336	340	344	348	352	356	360	365	370	374	379	384	389	394	398	403	407	

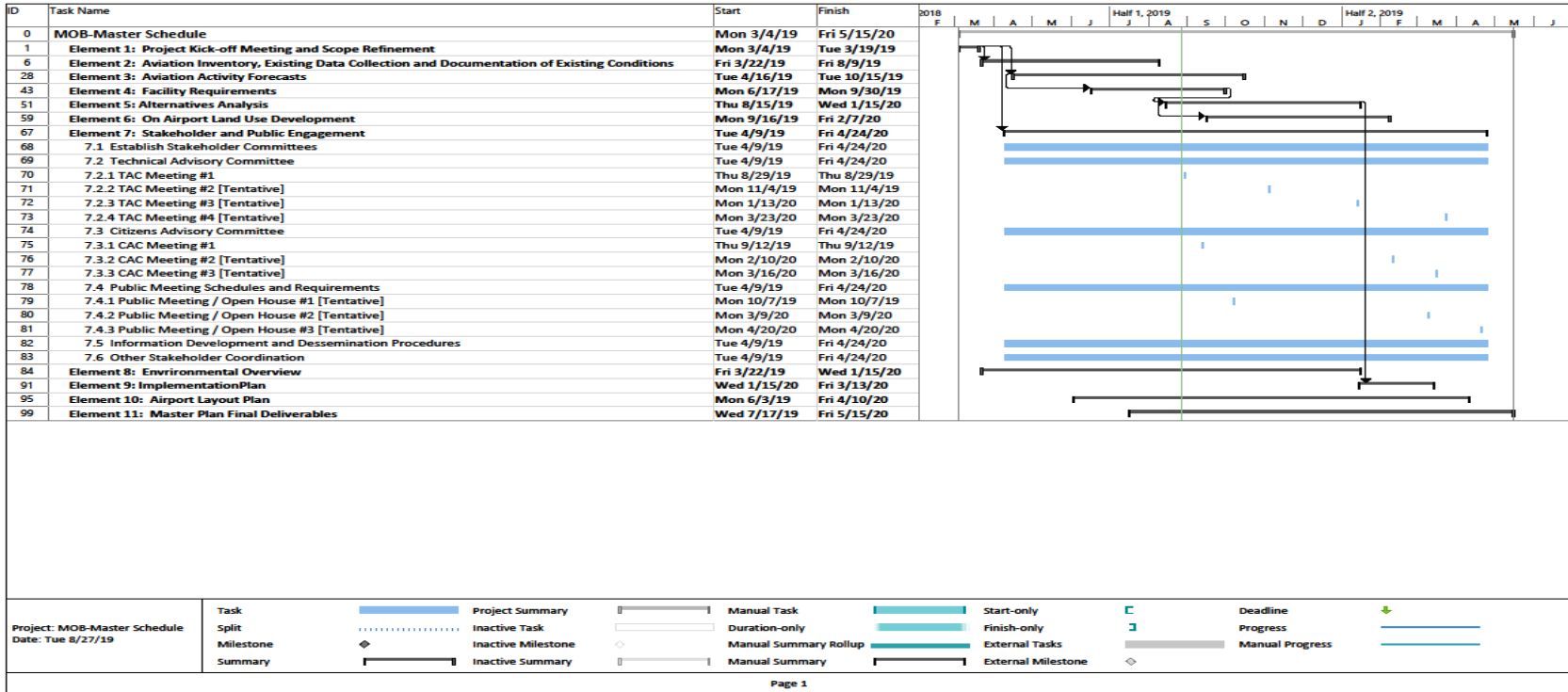
  

Prelim Forecast vs MOB TAF	15%	15%	15%	16%	16%	16%	17%	17%	17%	17%	17%	17%	17%	17%	17%	17%	17%	17%	17%	17%	17%	17%	17%	17%	17%	18%	18%
Prelim Forecast vs MOB TAF (adjusted)	6%	6%	7%	7%	7%	7%	8%	8%	8%	8%	8%	8%	8%	8%	8%	8%	8%	8%	8%	8%	8%	8%	8%	8%	8%	8%	8%

## Key Areas of Focus (Passenger Terminal)

- Identify suitable Passenger Terminal site within Mobile Downtown Airport
- Develop detailed inventory and evaluation of current land uses identifying a hierarchy of key functional areas (Inventory delivery to MAA 8/29/19)
- Seamlessly integrate Passenger Terminal facilities within an active industrial aviation complex
- Create an operationally functional, regulatory compliant and financially feasible transition and development plan
- Explore opportunities for both traditional and non-traditional funding opportunities

# Project Schedule



## Tasks Completed/Initiated to Date

- Data and Inventory Collection
- Final Draft of Airport Inventory (BFM/MOB)
- Draft of Passenger Activity Projections
- **Next Steps**
- Preliminary Facility Requirements (SEP 2019)
- Stand-up Project Website (SEP 2019)
- Next Technical Advisory Committee Meeting – NOV 2019



# Questions and Discussion